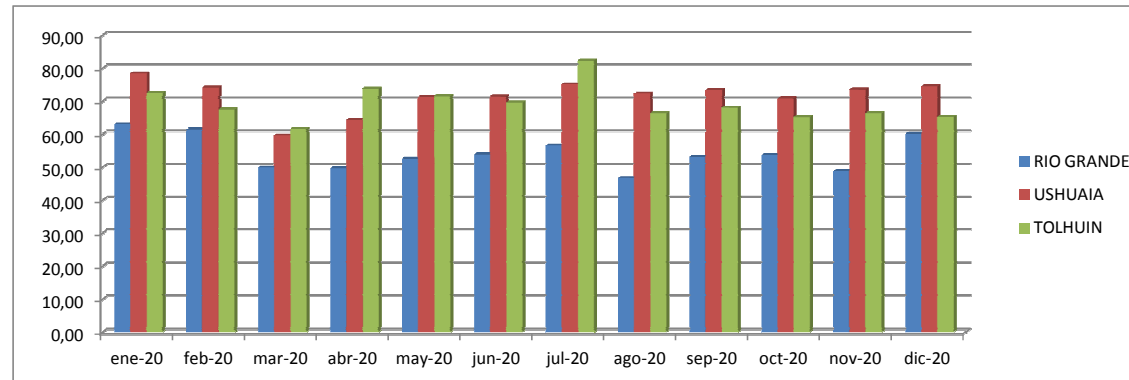


ANEXO V

DIRECCIÓN EJECUTIVA RECUPEROS DE CRÉDITOS IPVyH - MONTOS TOTALES FACTURACIÓN / RECUPER

Año		FACTURACIÓN						% FACTURACIÓN					RECUPERO						% RECUPERO											
		Río Grande	Annual	Ushuaia	Annual	Tolhuin	Annual	Total	Annual	Río Grande	Annual	Ushuaia	Annual	Tolhuin	Annual	Río Grande	Annual	Ushuaia	Annual	Tolhuin	Annual	Total	Annual	Río Grande	Annual	Ushuaia	Annual	Tolhuin	Annual	Total
2020	ene/20	12.361.233,72		14.666.571,58		323.277,34		27.351.082,65		45,19%	53,62%		1,18%		7.779.528,89		11.501.563,71		234.371,88		19.515.464,48		39,86%		58,94%		1,20%		71,35%	
	feb/20	12.589.582,45		13.259.458,23		337.965,51		26.187.006,19		46,03%	48,48%		1,24%		7.722.978,38		9.825.936,26		227.702,66		17.776.617,29		39,57%		50,35%		1,17%		67,88%	
	mar/20	10.894.551,09		12.789.918,24		323.879,07		24.008.348,40		39,83%	46,76%		1,18%		5.436.536,51		7.621.125,98		199.354,59		13.257.017,09		27,86%		39,05%		1,02%		55,22%	
	abr/20	11.737.183,50		12.961.675,92		334.762,09		25.033.621,51		42,91%	47,39%		1,22%		5.816.209,67		8.327.244,26		246.695,98		14.390.149,90		29,80%		42,67%		1,26%		57,48%	
	may/20	11.629.812,19		12.786.818,73		341.698,82		24.758.329,74		42,52%	46,75%		1,25%		6.099.500,60		9.101.284,66		244.040,70		15.444.825,96		31,25%		46,64%		1,25%		62,38%	
	jun/20	11.776.648,13		13.034.330,93		347.172,58		25.158.151,64		43,06%	47,66%		1,27%		6.341.342,95		9.300.880,79		241.478,00		15.883.701,74		32,49%		47,66%		1,24%		63,14%	
	jul/20	11.728.449,13		14.546.721,84		349.818,79		26.624.989,76		42,88%	53,19%		1,28%		6.624.061,92		10.929.628,14		287.903,81		17.841.593,87		33,94%		56,00%		1,48%		67,01%	
	ago/20	12.193.880,42		13.643.607,88		365.734,15		26.203.222,45		44,58%	49,88%		1,34%		5.692.362,07		9.852.133,42		242.606,59		16.082.771,66		29,17%		50,48%		1,24%		61,38%	
	sep/20	13.652.625,09		13.979.884,43		356.865,45		27.989.374,97		49,92%	51,11%		1,30%		7.244.062,95		10.264.030,16		242.411,17		17.750.504,29		37,12%		52,59%		1,24%		63,42%	
	oct/20	13.277.089,55		14.515.451,51		357.423,86		28.149.964,91		48,54%	53,07%		1,31%		7.130.521,57		10.285.074,63		232.643,12		17.648.239,32		36,54%		52,70%		1,19%		62,69%	
	nov/20	12.403.323,86		15.719.131,75		368.830,17		28.491.285,78		45,35%	57,47%		1,35%		6.048.901,88		11.561.274,05		244.682,98		17.854.858,92		31,00%		59,24%		1,25%		62,67%	
	dic/20	14.129.810,06		14.766.985,95		335.508,68		29.232.304,69		51,66%	53,99%		1,23%		8.496.230,05		10.983.868,14		218.481,95		19.698.580,14		43,54%		56,28%		1,12%		67,39%	

PORCENTAJE DE RECAUDACION MENSUAL POR CIUDAD 2020													
	ene-20	feb-20	mar-20	abr-20	may-20	jun-20	jul-20	ago-20	sep-20	oct-20	nov-20	dic-20	
RIO GRANDE	62,93	61,34	49,90	49,55	52,45	53,85	56,48	46,68	53,06	53,71	48,77	60,13	
USHUAIA	78,42	74,11	59,59	64,25	71,18	71,36	75,13	72,21	73,42	70,86	73,55	74,38	
TOLHUIN	72,50	67,37	61,55	73,69	71,42	69,56	82,30	66,33	67,93	65,09	66,34	65,12	



Fuente: Base de Datos sistema informático de cuentas IPVyH.

MAURO NESTOR OLEA
DIRECTOR EJECUTIVO RECUPERO
CRÉDITOS Y SEGUIMIENTO DE MOROSIDAD
IPVH - USHUAIA

IO MENSUALES POR CIUDAD

DÉBITO AUTOMÁTICO						% RECUPERO x DEBITO									
Río Grande	Annual	Ushuaia	Annual	Tolhuin	Annual	Total	Annual	Río Grande	Annual	Ushuaia	Annual	Tolhuin	Annual	Total	Annual
4.376.802,65		7.343.348,73		189.424,08		11.909.575,45		56,26%		63,85%		80,82%		61,03%	
4.401.647,78		7.300.117,99		206.978,63		11.908.744,39		56,99%		74,29%		90,90%		66,99%	
3.847.612,19		5.857.731,25		199.037,80		9.904.381,24		70,77%		76,86%		99,84%		74,71%	
4.491.038,73		7.437.337,08		245.072,74		12.173.448,56		77,22%		89,31%		99,34%		84,60%	
4.501.354,80		7.477.943,01		243.255,43		12.222.553,24		73,80%		82,16%		99,68%		79,14%	
4.336.988,88		7.398.655,17		238.109,29		11.973.753,34		68,39%		79,55%		98,60%		75,38%	
4.450.487,74		7.714.597,66		231.924,87		12.397.010,27		67,19%		70,58%		80,56%		69,48%	
4.375.165,18		7.866.504,02		230.306,35		12.471.975,55		76,86%		79,85%		94,93%		77,55%	
4.376.009,29		7.895.588,32		226.531,44		12.498.129,06		60,41%		76,92%		93,45%		70,41%	
4.600.498,29		8.193.815,32		224.661,17		13.018.974,78		64,52%		79,67%		96,57%		73,77%	
4.432.091,02		8.046.660,98		241.907,58		12.720.659,58		73,27%		69,60%		98,87%		71,24%	
4.475.857,25		8.023.879,15		215.271,92		12.715.008,33		52,68%		73,05%		98,53%		64,55%	
	52.665.553,80		90.556.178,69		2.692.481,30		145.914.213,79		36,09%		62,06%		1,85%		71,83%